

## Directions

**The Great Escape Lodge and Waterpark  
1213 State Route 9, Queensbury, NY 12804**

### From Albany, NY (from South):

I-87 North (Adirondack Northway) to Exit 20.  
South on Route 9 approximately ¼ mile  
Turn right onto Six Flags Drive.

### From Rutland, VT (from East):

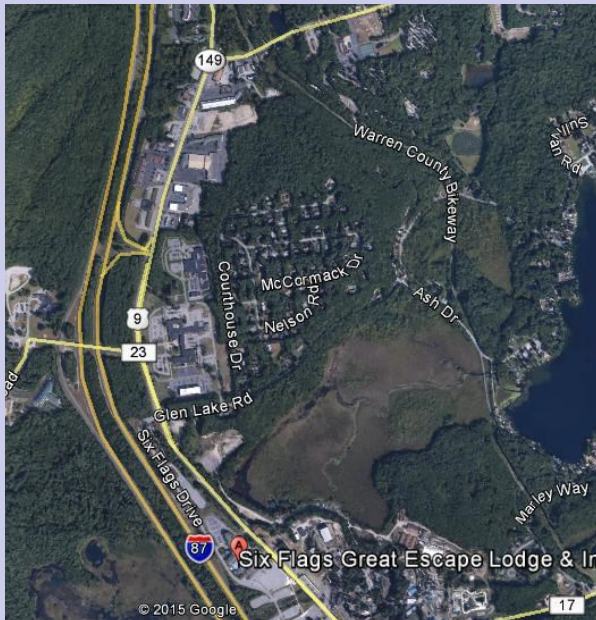
Route 7 South to Route 4.  
West on Route 4 to Route 149 West  
Route 149 to Route 9, turn left.  
South on Route 9 approximately one mile  
Turn right onto Six Flags Drive.

### From Syracuse, NY (from West):

I-90 East (NYS Thruway)  
Exit 24 to Albany  
North on I-87 (Adirondack Northway) to Exit 20  
South on Route 9 approximately ¼ mile  
Turn right onto Six Flags Drive.

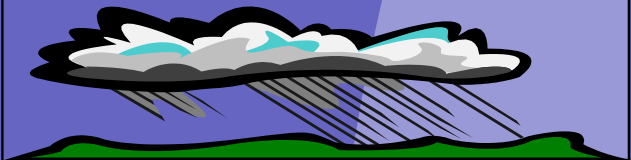
### From Plattsburgh, NY (from North):

Take I-87 South (Adirondack Northway) to Exit 20  
South on Route 9 approximately ¼ mile  
Turn right onto Six Flags Drive.



North Country Stormwater Tradeshow & Conference  
C/O CWICNY  
PO Box 765  
Lake George, NY 12845

# 11<sup>th</sup> Annual North Country Stormwater Tradeshow & Conference



**Thursday  
October 15<sup>th</sup>, 2015  
8:00 am - 4:00 pm  
The Great Escape Lodge  
Queensbury, NY**

Sponsored By  
**Champlain Watershed  
Improvement Coalition of NY**  
and  
**Lake Champlain Basin Program**

# North Country Stormwater Tradeshow & Conference

## Registration Form

Early Registration Fee - **\$80** (Before October 8<sup>th</sup>)

Late Registration Fee - **\$95** (After October 8<sup>th</sup>)

Make Checks or Vouchers payable to **CWICNY** and  
send to:

*CWICNY*

*PO BOX 765*

*Lake George, NY 12845*

*Fax: (518) 668-5774*



NO REFUNDS WILL BE GIVEN AFTER OCTOBER 8, 2015  
NO-SHOWS WILL BE CHARGED

**Name:** \_\_\_\_\_

**Organization:** \_\_\_\_\_

**Address:** \_\_\_\_\_

**City, State, Zip:** \_\_\_\_\_

**Phone Number:** \_\_\_\_\_

**Email Address:** \_\_\_\_\_

**Please check if you would like:**

**Professional Development Hours**

**Code Enforcement Credits**

**Other:** \_\_\_\_\_

# 2015 Conference Line-Up

## City of Plattsburgh Stormwater System Vulnerability Assessment and US Oval Bioretention Project



*Kevin Farrington, PE  
City of Plattsburgh Engineer*

## PHIPPS Conservation Stormwater Initiative



*Photo courtesy of PHIPPS Conservatory*

*Fred Pape, Specialty Projects Manager  
Lentzcaping, Inc.*

## Clean Water Optimization Tool

*Deb Caraco, Center for Watershed Protection*

The Clean Water Optimization Tool is a planning tool for communities to develop more cost-effective strategies for reducing stormwater pollution to meet nutrient and sediment reduction goals. Although the impetus for the Tool was the Chesapeake Bay TMDL, it can also be used to address local impairments for nutrients and sediment. The Tool allows the user to optimize BMP selection based on cost-effectiveness for a particular pollutant, determine the practical limits of implementation, and evaluate progress towards water quality goals.

## NYS Stormwater Design Manual Update

*Dave Gasper, NYS DEC*

The 2015 updates include the addition of pond safety provisions in Chapter 6, updated isohyet maps in Chapter 4 and clarification of sizing criteria in Chapters 3, 4, 9, and 10 to be consistent with recent changes to Construction General Permit (GP-0-15-002).

## Stormwater & GI Project Case Studies

*Sean Doty, PE & Kelsey Carr, PE  
The Chazen Companies*

*Registration begins at 8:00 am. Conference begins promptly at 8:30 am.  
Professional Development Hours and Code Enforcement credits are pending*

**Two half-hour breaks and buffet lunch  
included. Register early, space is limited!**

For more information, please contact  
Beth Gilles, Lake Champlain—Lake George  
Regional Planning Board  
at bgilles\_rpb@verizon.net or (518) 668-5773

## Accommodations

The Great Escape Lodge has set aside a block of rooms at \$99.00/night. Please contact them at 518-824-6060 and mention that you are with the North Country Stormwater Tradeshow and Conference.